

# ER300-2700

**ER300-2700,**  
**Maxium payload 300 kg with maxium reach 2702 mm.**

## ■ Highlights

A brand new heavy-duty platform product, with all shafts connected by rigid gears, providing superior torque performance for the robot wrist; The robot's repeated positioning accuracy has been improved by 50%, which belongs to the leading level in the same level and can cope with various high-precision application scenarios; Combining high rigidity transmission design with advanced trajectory algorithms, it has stronger dynamic performance and more stable high-speed operation.

## ■ Applications

It can be used in Spot welding, SW-Stud welding, handling operations, cell changing disc and group disc, palletizing, assembling, grinding, polishing, etc.

## ■ Industries

Suitable for auto, Lithium battery, photovoltaic, food and beverage, building materials, logistics and warehousing and other industries.



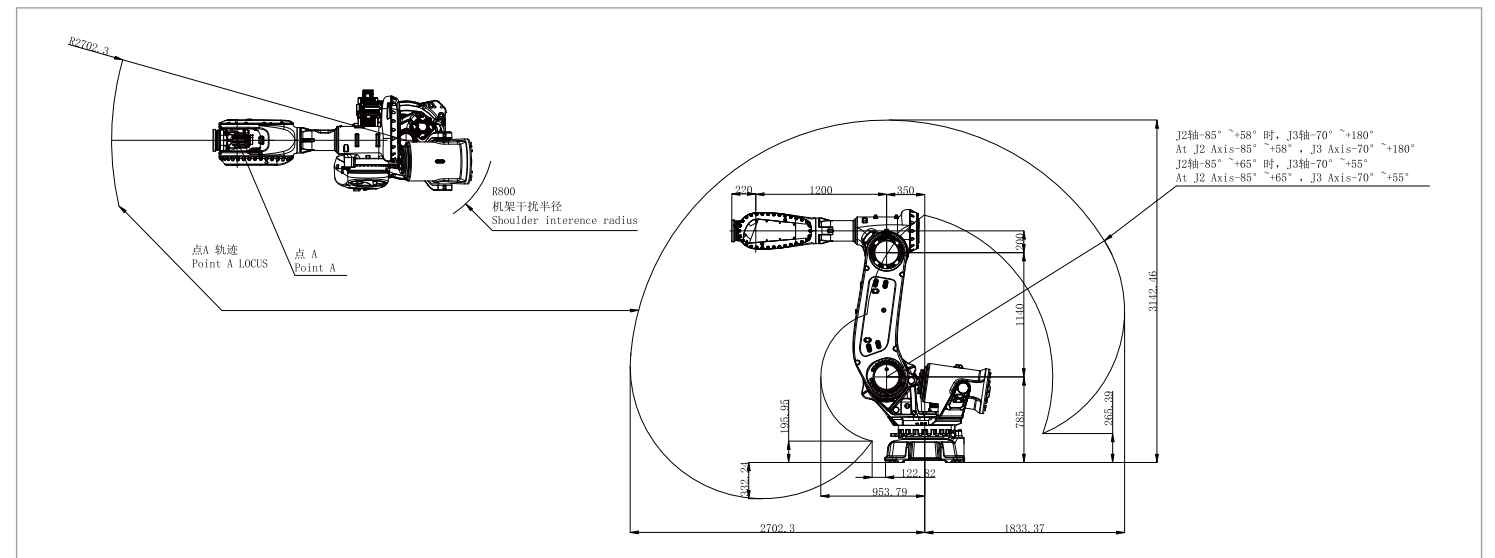
***EFORT***

## SPECIFICATIONS

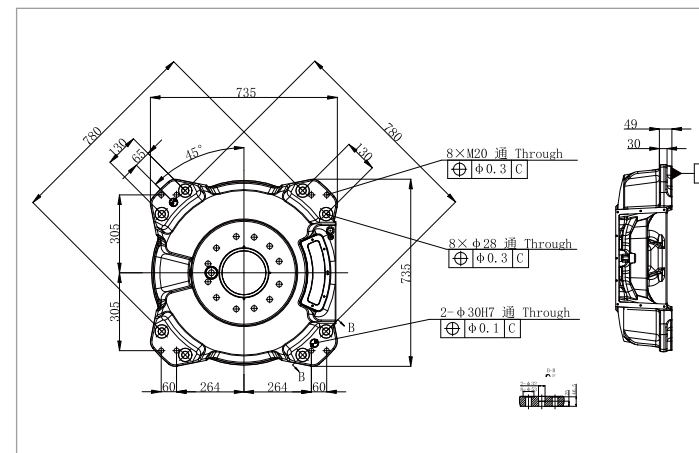
Model		ER300-2700
Type		Articulated
Controlled axes		6 Axes
Max. payload on wrist		300 kg
Repeatability		±0.05 mm
Robot weight		1580 kg
Reach		2702 mm
Robot IP grade		IP65
Cabinet IP grade		IP54
Drive mode		AC servo drive
Installation		Floor
Installation enviroment	Ambient temperature	0~45 °C
	Ambient humidity	RH≤80% (No dew nor frost allowed)
	Vibration acceleration	4.9 m/s <sup>2</sup> (<0.5 G)

Allowable load moment at wrist	J4	1830 N•m
	J5	1830 N•m
	J6	900 N•m
Allowable load inertia at wrist	J4	325 kg•m <sup>2</sup>
	J5	325 kg•m <sup>2</sup>
	J6	230 kg•m <sup>2</sup>
Maximum speed	J1	105°/sec
	J2	100°/sec
	J3	110°/sec
	J4	140°/sec
	J5	110°/sec
	J6	180°/sec
Motion range	J1	±185°
	J2	+65°/-85°
	J3	+180°/-70°
	J4	±360°
	J5	±130°
	J6	±360°

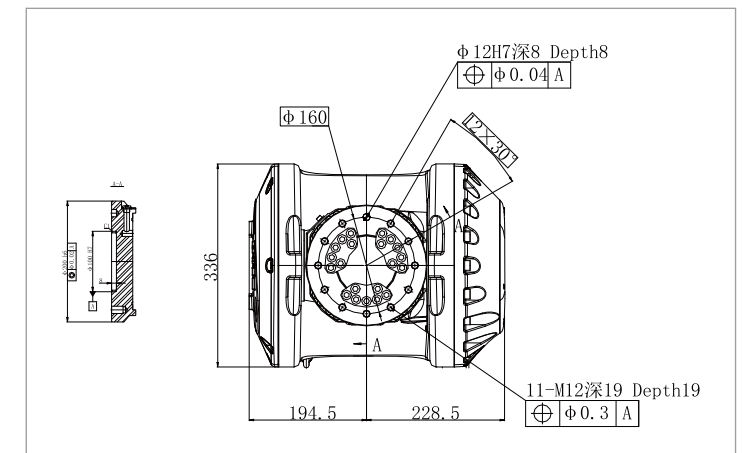
## OPERATING SPACE



### BASE MOUNTING SIZE



### END FLANGE MOUNTING SIZE



**EFORT Intelligent Robot Co., Ltd.**

PHONE: (00 86) 400-052-8877  
ADDRESS: No. 96, Wanchun East Road, Wuhu, China  
(Anhui) Pilot Free Trade Zone  
WWW.EFORT.COM.CN

\*The final interpretation right belongs to EFORT Intelligent Robot Co., Ltd. Any updates will be made without prior notice.

Information Release Time 2025/04