

# ER10-4-900

ER10-4-900,  
Maxium payload 10 kg with maxium reach 860 mm.

- Highlights**  
High inertia design of the robot wrist greatly improves the stability in high-speed movement. It plus advanced kinematic algorithms to helps the takt improved by 25%;  
Thanks to industry-leading joint seal construction and oil leakage prevention design, the robot can help customers easily face various scenarios with high cleanliness requirements;  
The 4th rotation axis offer more flexibility to variey kinds of robot mounting position.
- Applications**  
It can be used in handling operations.
- Industries**  
Suitable for PCB, electronic manufacturing, plastic, metal parts and other industries.



EFORT Intelligent Robot Co., Ltd.  
PHONE: (00 86) 400-052-8877  
ADDRESS: No. 96, Wanchun East Road, Wuhu, China  
(Anhui) Pilot Free Trade Zone  
WWW.EFORT.COM.CN

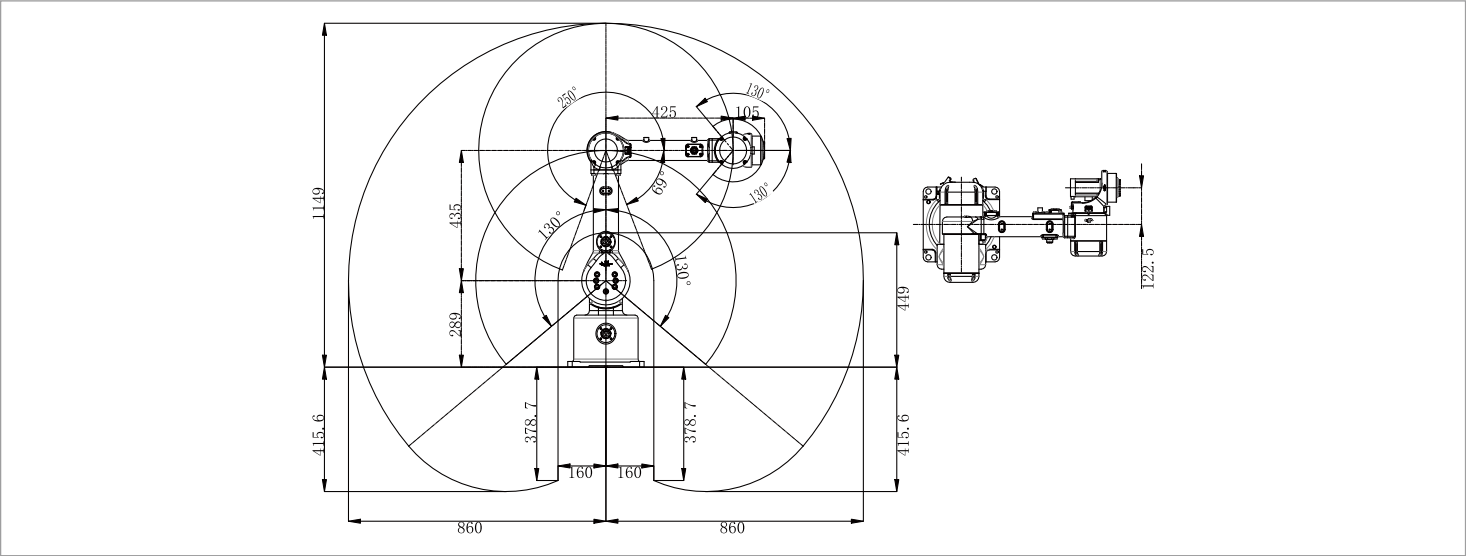
EFORT

## SPECIFICATIONS

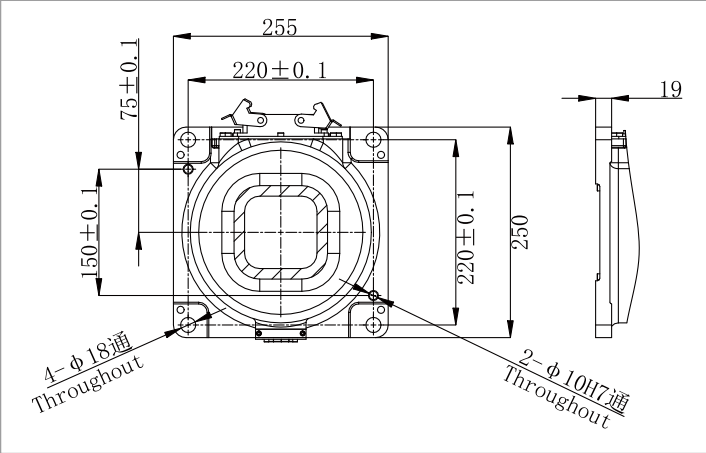
Model		ER10-4-900
Type		Articulated
Controlled axes		4 Axes
Max. payload on wrist		10 kg
Repeatability		±0.05 mm
Robot weight		35 kg
Reach		860 mm
Robot IP grade		IP54
Cabinet IP grade		IP20
Installation enviroment	Ambient temperature	0~45 °C
	Ambient humidity	RH≤80% (No dew nor frost allowed)
	Vibration acceleration	4.9 m/s <sup>2</sup> (<0.5 G)

Drive mode		AC servo drive
Installation		Upside-down
Allowable load moment at wrist	J3	20 N·m
	J4	8 N·m
Allowable load inertia at wrist	J3	1.5 kg·m <sup>2</sup>
	J4	0.8 kg·m <sup>2</sup>
Maximum speed	J1	300°/sec
	J2	320°/sec
	J3	380°/sec
	J4	600°/sec
Motion range	J1	±130°
	J2	+250°/-69°
	J3	±130°
	J4	±360°

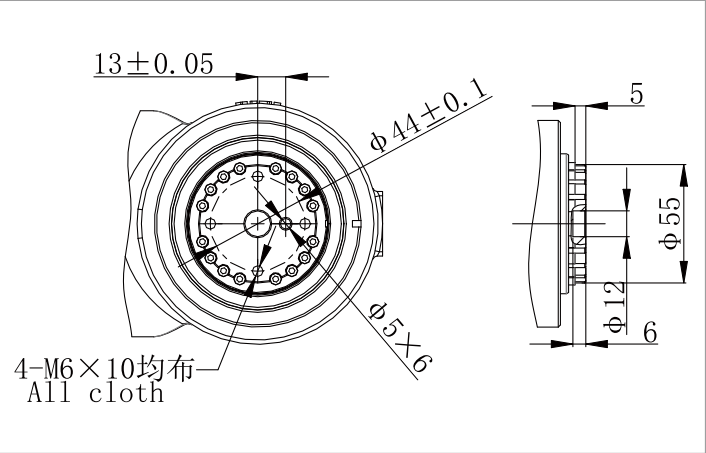
## OPERATING SPACE



## BASE MOUNTING SIZE



## END FLANGE MOUNTING SIZE



\*The final interpretation right belongs to EFORT Intelligent Robot Co., Ltd. Any updates will be made without prior notice.