

ER10-3-900

ER10-3-900,
Maxium payload 10 kg with maxium reach 860 mm.

- Highlights

High inertia design of the robot wrist greatly improves the stability in high-speed movement. It plus advanced kinematic algorithms. helps the takt improved by 25%;
Thanks to industry-leading joint seal construction and oil leakage prevention design, the robot can help customers easily face various scenarios with high cleanliness requirements.
- Applications

It can be used in handling operations.
- Industries

Suitable for PCB, electronic manufacturing, plastic, metal parts, and other industries.



EFORT Intelligent Robot Co., Ltd.
PHONE: (00 86) 400-052-8877
ADDRESS: No. 96, Wanchun East Road, Wuhu, China
(Anhui) Pilot Free Trade Zone
WWW.EFORT.COM.CN

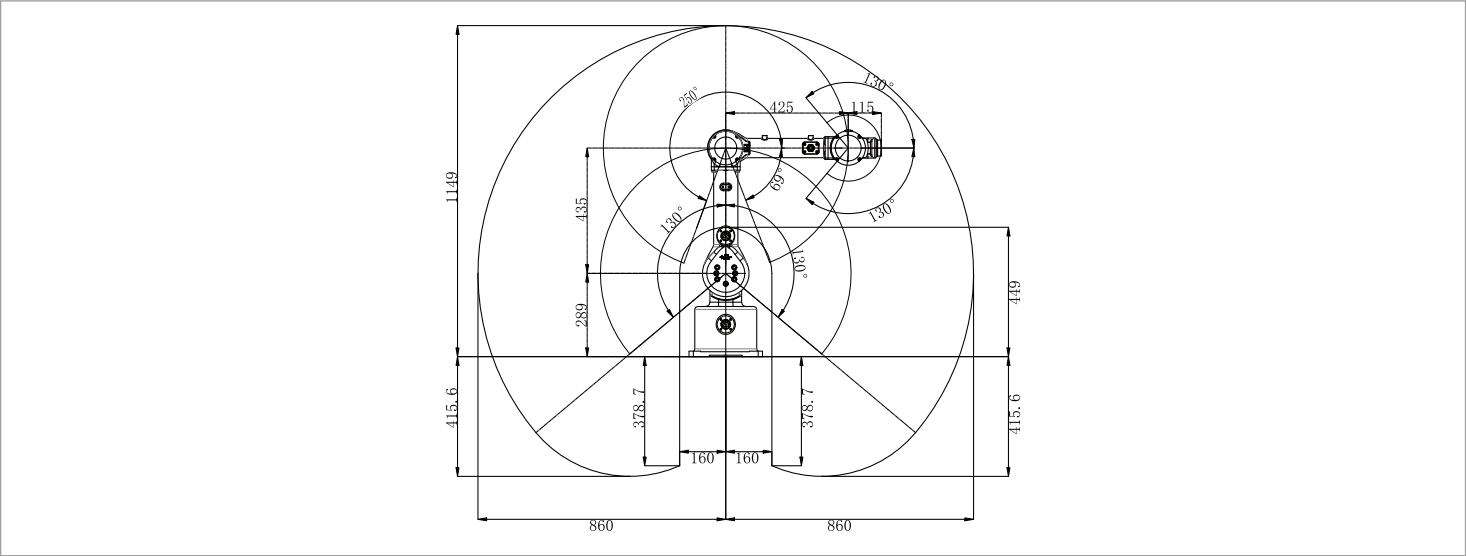
EFORT

SPECIFICATIONS

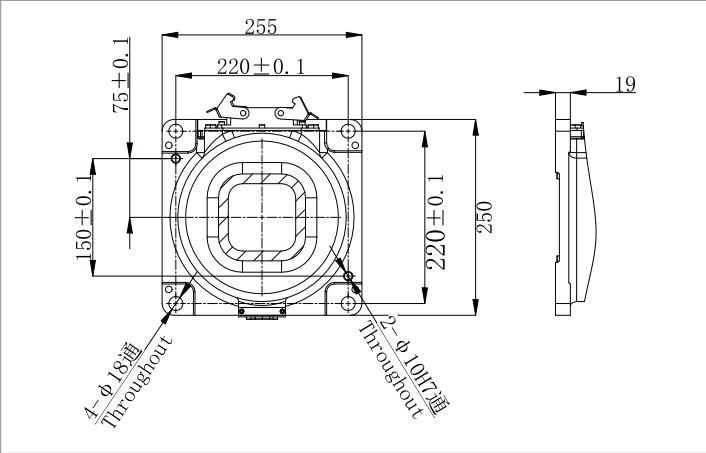
| | |
|-----------------------|----------------|
| Model | ER10-3-900 |
| Type | Articulated |
| Controlled axes | 3 Axes |
| Max. payload on wrist | 10 kg |
| Repeatability | ±0.05 mm |
| Robot weight | 30 kg |
| Reach | 860 mm |
| Robot IP grade | IP54 |
| Cabinet IP grade | IP20 |
| Drive mode | AC servo drive |
| Installation | Upside-down |

| | | |
|---------------------------------|------------------------|-----------------------------------|
| Installation enviroment | Ambient temperature | 0~45 °C |
| | Ambient humidity | RH≤80% (No dew nor frost allowed) |
| | Vibration acceleration | 4.9 m/s ² (<0.5 G) |
| Allowable load moment at wrist | J 3 | 20 N·m |
| Allowable load inertia at wrist | J 3 | 1.5 kg·m ² |
| Maximum speed | J 1 | 300°/sec |
| | J 2 | 320°/sec |
| | J 3 | 380°/sec |
| Motion range | J 1 | ±130° |
| | J 2 | +250°/-69° |
| | J 3 | ±130° |

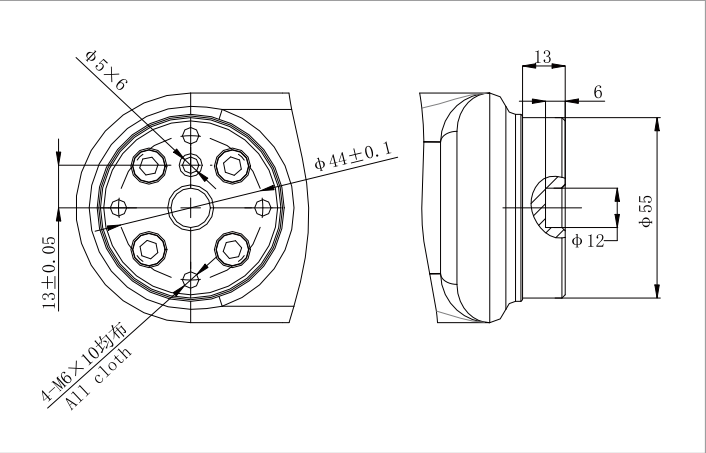
OPERATING SPACE



BASE MOUNTING SIZE



END FLANGE MOUNTING SIZE



*The final interpretation right belongs to EFORT Intelligent Robot Co., Ltd. Any updates will be made without prior notice.