

ER3-600

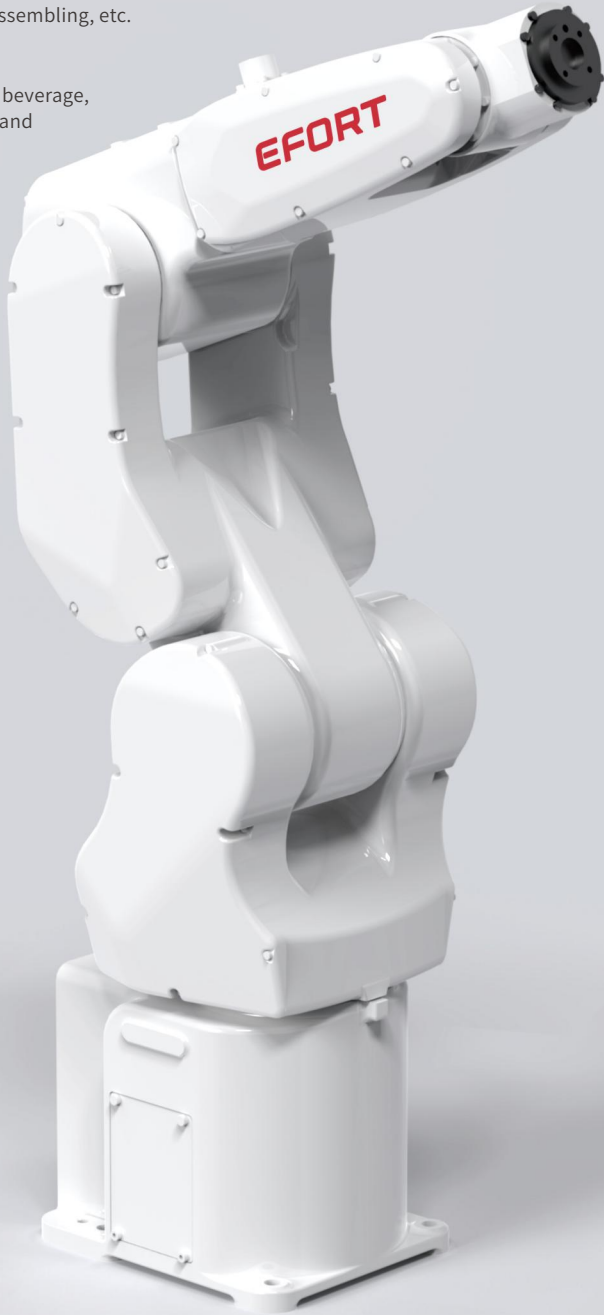
EFORT

ER3-600,
Maxium payload 3 kg with maxium reach 593 mm.

Highlights
Thanks to its compact structure and built-in cable design, the ER3-600 can be easily integrated and installed, helping customers overcome harsh space installation requirements;
ER3-600 also has a customized disassembly version for education programs, which can meet the education requirements with intelligent manufacturing focus.

Applications
It can be used in handling operations, sorting, assembling, etc.

Industries
Suitable for electronic manufacturing, food and beverage, metal parts, education, plastic, pharmaceutical and other industries.



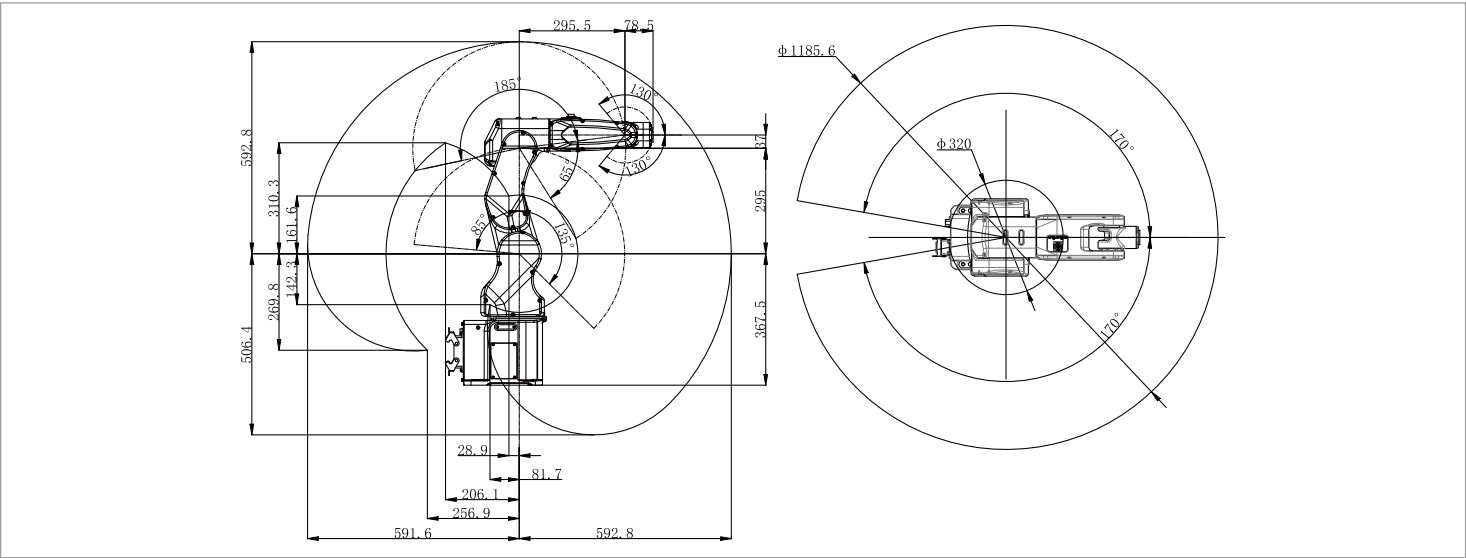
EFORT Intelligent Robot Co., Ltd.
PHONE: (00 86) 400-052-8877
ADDRESS: No. 96, Wanchun East Road, Wuhu, China
(Anhui) Pilot Free Trade Zone
WWW.EFORT.COM.CN

SPECIFICATIONS

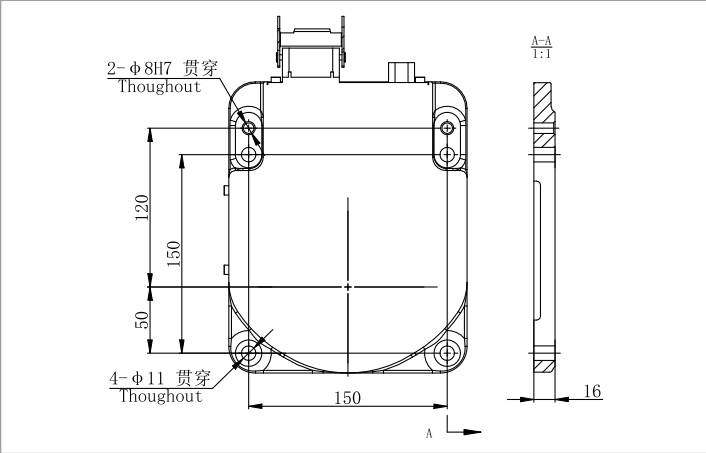
Model		ER3-600
Type		Articulated
Controlled axes		6 Axes
Max. payload on wrist		3 kg
Repeatability		±0.02 mm
Robot weight		27 kg
Reach		593 mm
Robot IP grade		IP40
Cabinet IP grade		IP20
Drive mode		AC servo drive
Installation		Floor, Upside-down, Wall, Angle
Installation enviroment	Ambient temperature	0~45 °C
	Ambient humidity	RH≤80% (No dew nor frost allowed)
	Vibration acceleration	4.9 m/s ² (<0.5 G)

Allowable load moment at wrist	J4	4.45 N·m
	J5	4.45 N·m
	J6	2.2 N·m
Allowable load inertia at wrist	J4	0.27 kg·m ²
	J5	0.27 kg·m ²
	J6	0.03 kg·m ²
Maximum speed	J1	400°/sec
	J2	300°/sec
	J3	520°/sec
	J4	500°/sec
	J5	530°/sec
	J6	840°/sec
Motion range	J1	±170°
	J2	+85°/-135°
	J3	+185°/-65°
	J4	±190°
	J5	±130°
	J6	±360°

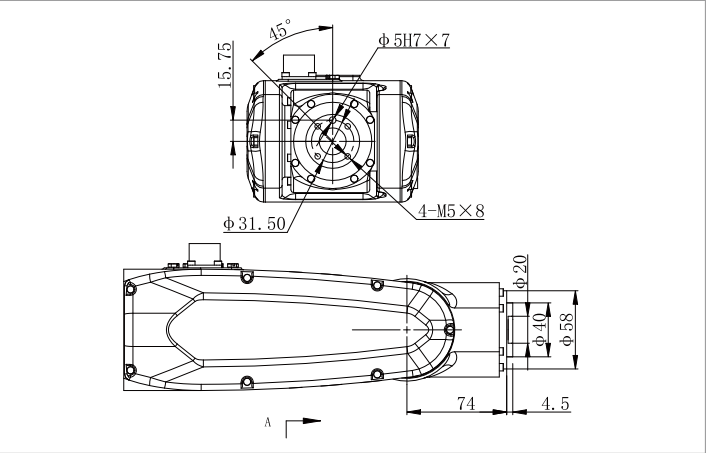
OPERATING SPACE



BASE MOUNTING SIZE



END FLANGE MOUNTING SIZE



*The final interpretation right belongs to EFORT Intelligent Robot Co., Ltd. Any updates will be made without prior notice. Information Release Time 2025/04